



# Gibson County Regulated Drains

1 inch = 8,000 feet

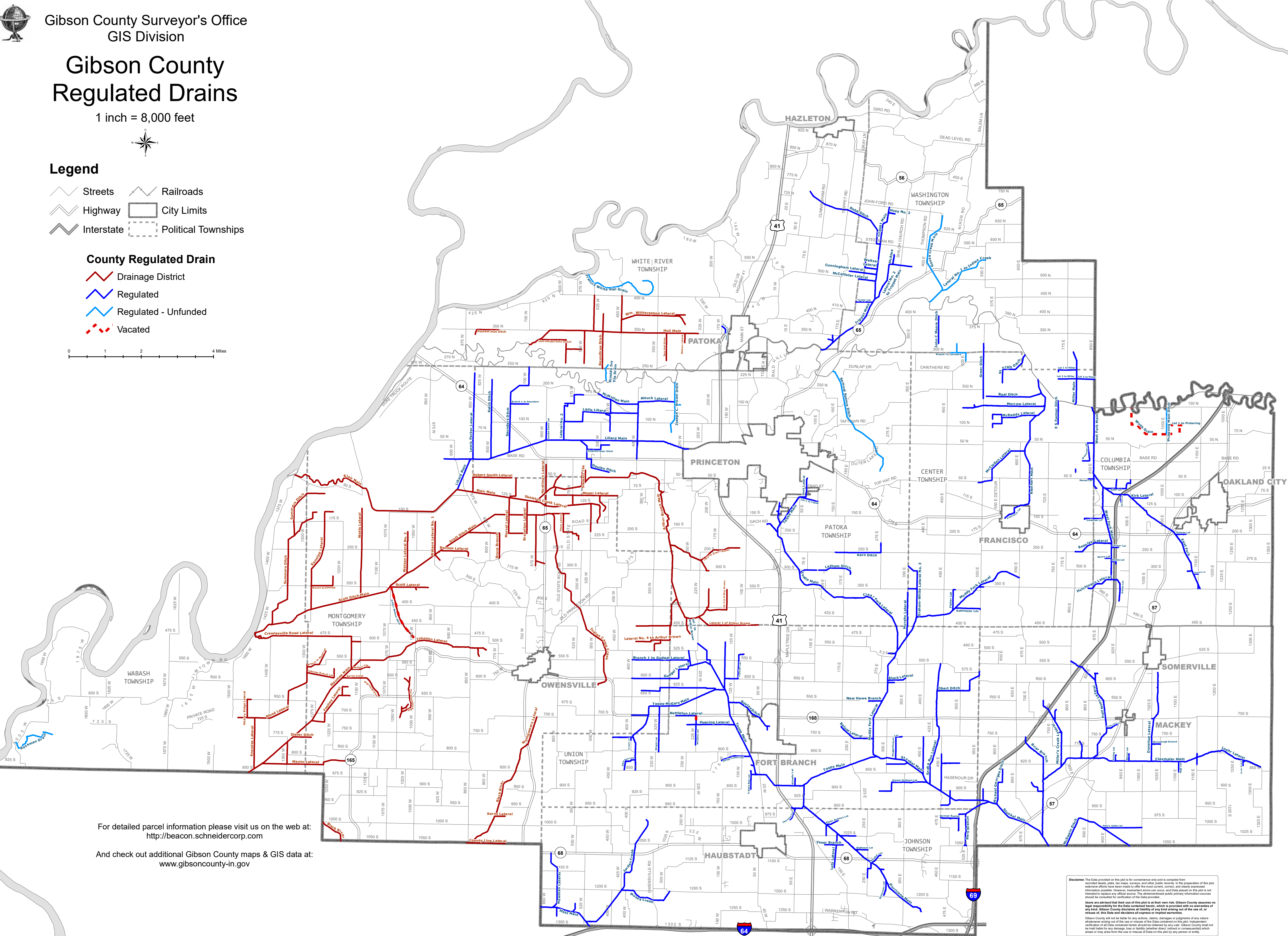
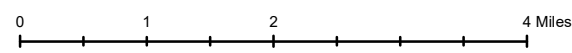


## Legend

- Streets
- Highway
- Interstate
- Railroads
- City Limits
- Political Townships

## County Regulated Drain

- Drainage District
- Regulated
- Regulated - Unfunded
- Vacated



For detailed parcel information please visit us on the web at:  
<http://beacon.schneidercorp.com>

And check out additional Gibson County maps & GIS data at:  
[www.gibsoncounty-in.gov](http://www.gibsoncounty-in.gov)

**Disclaimer:** The Data provided on this plot is for convenience only and is compiled from recorded deeds, plat, tax maps, surveys, and other public records. In the preparation of this plot, extreme efforts have been made to offer the most current, correct, and clearly represented information possible. However, inadvertent errors can occur, and Data placed on this plot is not intended to replace any official source. The aforementioned public primary information sources should be consulted for verification of the Data provided.

**Users are advised their use of this plot is at their own risk. Gibson County assumes no legal responsibility for the Data contained herein, which is provided with no warranty of any kind. Gibson County disclaims all liability of any kind arising out of the use of, or misuse of, this Data and disclaims all express or implied warranties.**

Gibson County will not be liable for any actions, claims, damages or judgments of any nature whatsoever arising out of the use or misuse of the Data contained on this plot. Independent verification of Data contained herein should be obtained by any user. Gibson County shall not be held liable for any damage, loss or liability (whether direct, indirect or consequential) which arises or may arise from the use or misuse of Data on this plot by any person or entity.